

Welcome to the UK's premier ENDOCRINOLOGY EVENT!

The Society for Endocrinology invites you to join us at our SfE BES conference 2017, taking place 6-8 November in Harrogate.

As the UK's largest endocrine event, SfE BES attracts an international delegation of scientists, clinicians and nurses from the full spectrum of endocrine disciplines.

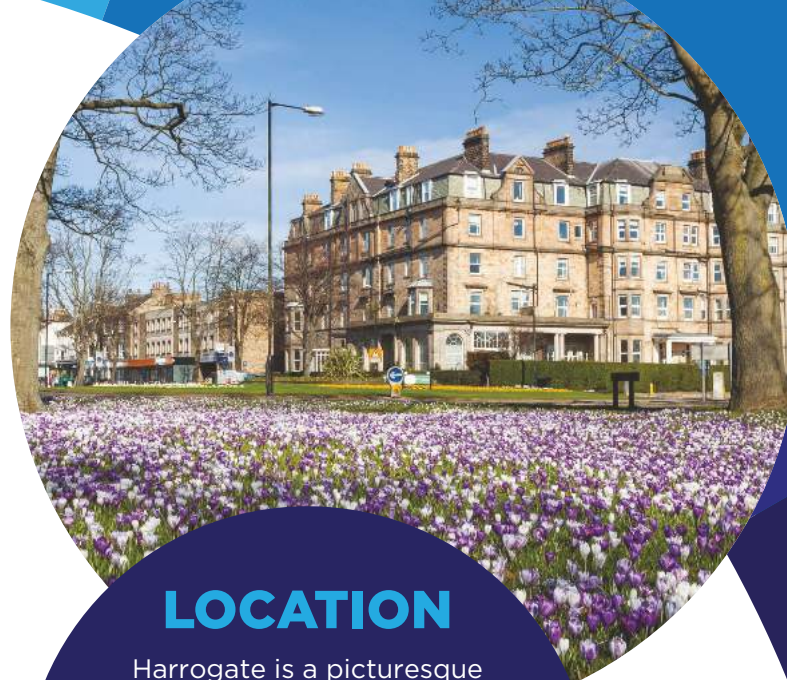
With a variety of sponsorship opportunities available, SfE BES offers a truly unique opportunity to engage, educate and inspire around 1,000 endocrine specialists.

2016 delegate PROFILE

SfE BES attracts an audience of influential endocrine experts and key opinion leaders from across the UK, Europe and beyond.

AREA OF INTEREST:

103 ADRENALS	2 BEHAVIOUR	58 BONE / CALCIUM
7 CANCER	16 CARDIOVASCULAR, HYPERTENSION	6 COMPARATIVE ENDOCRINOLOGY
1 CYTOKINES & GROWTH FACTORS	176 DIABETES, METABOLISM & NUTRITION	16 ENDOCRINE DISRUPTORS
18 ENDOCRINE SURGERY	72 ENDOCRINE TUMOURS & NEOPLASIA	6 GENE REGULATION
12 GENETICS	6 GROWTH DEVELOPMENT	84 NEURO- ENDOCRINOLOGY
80 REPRODUCTION (MALE & FEMALE)	1 SIGNAL TRANSDUCTION	12 STEROID RECEPTORS
149 THYROID	275 OTHER	



LOCATION

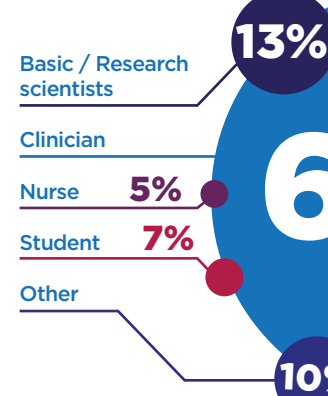
Harrogate is a picturesque town located in the heart of the Yorkshire Dales. This pretty market town is filled with boutiques, antique shops and fantastic accommodation. Conference facilities for SfE BES 2017 are excellent, the Harrogate International Centre being one of the largest venues outside of London.



TWITTER
IMPRESSIONS:



PROFESSIONS
REPRESENTED:



CONTACT

Exhibition and sponsorship:
Tel: +44 (0)1454 642200
Email: sales@bioscientifica.com

Terms & CONDITIONS

PAYMENT TERMS & CANCELLATION POLICY

Upon receipt of a completed application form, confirmation of your preferred stand and sponsorship will be sent. The full balance will be invoiced upon receipt of the booking form unless otherwise arranged. SfE BES 2017 conference secretariat reserves the right to change the layout as necessary. VAT will be charged as applicable, and is subject to changes in legislation.



Managed by
Bioscientifica Ltd
Euro House, 22 Apex Court
Woodlands, Bradley Stoke
Bristol, BS32 4JT, UK

+44 (0) 1454 642200
+44 (0) 1454 642222
sales@endocrinology.org
www.bioscientifica.com

Bioscientifica Ltd
Company Limited by Guarantee
Registered in England No. 3190519
VAT GB 869994528

SFE PARTNER:



PLATINUM SPONSOR:



GOLD SPONSOR:



SILVER SPONSORS:



SfE BES

6-8 November
HARROGATE

2017

Exhibition &
sponsorship
prospectus

managed by
bioscientifica

Society for
Endocrinology

Satellite SYMPOSIA

A unique platform to disseminate your organisation's latest research to an audience of scientists, clinicians and students with an interest in your key therapy area.

- **Lunchtime slots across Monday, Tuesday and Wednesday.**
- **Breakfast slots on Tuesday.**
- **Publishing of the satellite symposium programme in the SfE BES 2017 final programme.**
- **Inclusion of the satellite symposium invitation in delegate bags.**
- **Pre-conference email to all registered delegates.**
- **60 minutes' access to the conference room.**
- **Standard audio-visual equipment and staffing.**
- **Access to the speaker preview room.**

Sponsors of the symposia must arrange all scientific content, speaker arrangements including invites, travel, accommodation, registration fees, publicity etc. and all associated costs. Any delegate refreshments required are subject to proposal. Content of satellite symposia is subject to approval by the Programme Committee.

SATELLITE SYMPOSIA:

Lunchtime	£16,000
Breakfast	£11,000

Our aim is to support your conference attendance objectives and help you achieve greater returns on your time and investment. Contact us today to discuss your ideas and options available.

WEBCAST

A new opportunity to extend your reach by webcasting your Satellite Symposia. As well as the thousand delegates that attend the conference, the post-conference online content will be promoted to delegates and the Society membership – over 2,500 HCPs. Film crew, equipment and editing provided. Contact us for more information.

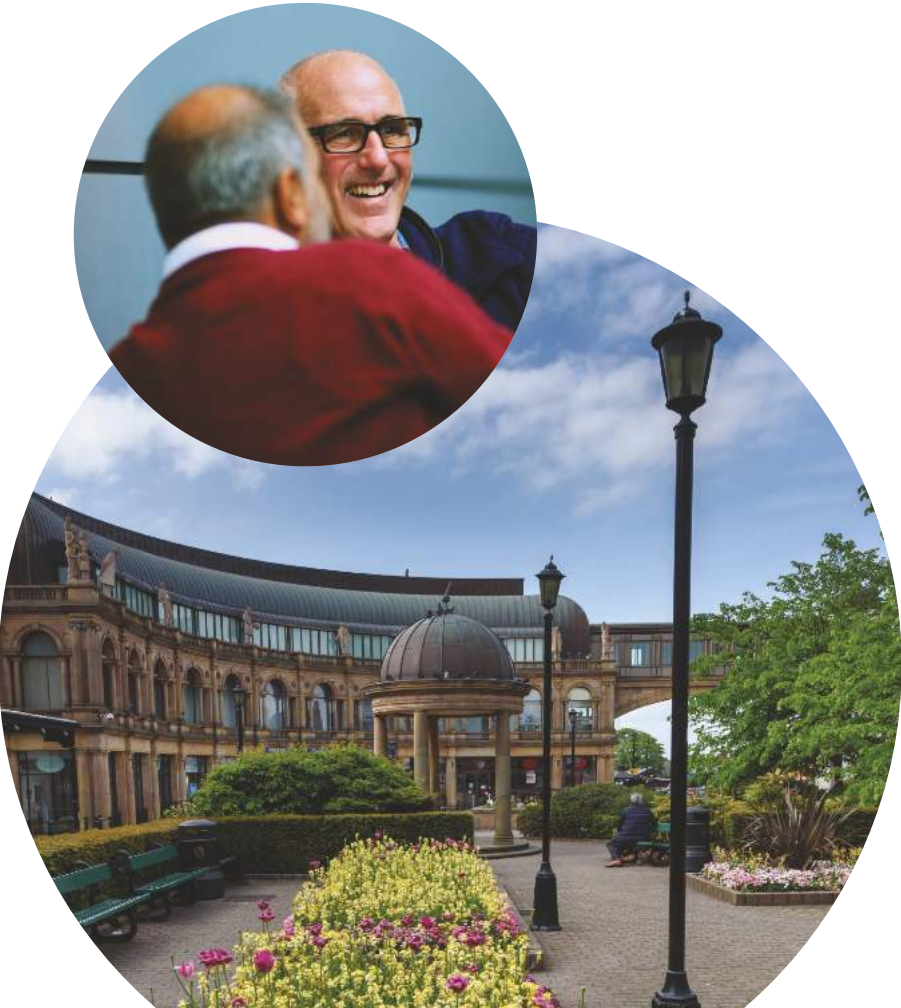
£5,000

GET THE LATEST
INFORMATION...

#SfEBES2017

Benefits of supporting SfE BES 2017

- **The UK's premier Endocrinology event – hosts the largest group of endocrinologists at any medical conference in the UK.**
- **Unrivalled access to 1,000 healthcare professionals.**
- **Deliver key messages to a highly influential audience.**
- **Align your brand with key disease, therapeutic area or speciality.**
- **High return on investment.**
- **Be seen as an industry leader in endocrinology.**
- **Prominent trade exhibition with all catering breaks held within the exhibition area.**



Sponsorship OPPORTUNITIES

MAXIMISE YOUR PRESENCE & BUILD AWARENESS AT SfE BES 2017

We offer a number of sponsorship options to help you get the most out of your time at the conference. If you have bespoke requirements, please email sales@bioscientifica.com to discuss a tailored package to meet your needs.

NEW FOR 2017:

Abstracts on a USB	£15,000
A complete collection of conference abstracts to be handed out to all delegates on an encrypted read-only USB stick.	

Demonstration Theatre	£5,000 per 15 minute slot
-----------------------	------------------------------

The opportunity to host a small, informal theatre for commercial presentations to enhance participants learning. The theatre will operate short slots of around 15 minutes during coffee breaks. Price includes AV and listing of the programme on the main and mobile website, as well as in the programme book.

GIVE-AWAYS:

Lanyards	£5,000 + cost + supply
Delegate bags	£5,000 + cost + supply
Pads and pens	£800 + cost + supply

AFTER THE CONGRESS

Email to registered delegates	£1,500
Online evaluation system sponsorship	£1,000

CONFERENCE DINNER

Sponsor a table at the SfE BES conference dinner.	£POA
---	------

MEETING ROOMS

Private meeting rooms are available to hire during the congress, please ask the conference secretariat about room availability.



ADD VISIBILITY

PRE-EVENT MARKETING:

Website banner advert on the SfE BES 2017 website	£1,500 per month
---	------------------

ONSITE DURING THE CONGRESS:

Mobile web app	£6,000
Early Career Endocrinologists' social evening sponsorship	£1,000
Venue banners	£POA
Signage sponsorship	£1,500
Adverts in the programme book and abstract book from	£1,500
Delegate bag inserts	£350 – £650
Networking centre	£2,000
Holding slide (shown on all days of conference within sessions)	£1,500
Poster boards	£1,000 (per category)
Poster boards	£5,000 (for all posters)

Access to around
1,000
PROFESSIONALS
in the field of
endocrinology

Exhibition SPACES

SfE BES 2017 will feature a prominent trade exhibition area, along with posters and catering, that provides optimum interaction opportunities between all our exhibitors and delegates.

SPACE ONLY PACKAGES

SPACE RENTAL INCLUDES:

- Two exhibitor passes per 9 sqm
- A 250 word company profile in final programme book
- Company name listed on meeting website
- Lunches and refreshments in scheduled breaks

Space only:	£445 per sqm
-------------	--------------

SHELL SCHEME PACKAGES

MINIMUM SPACE RENTAL OF 9 SQM, INCLUDES BENEFITS OF THE SPACE ONLY PACKAGE PLUS:

- Wall panels
 - 50w spotlight
 - Name board
 - Table and 2 chairs
- Please note all exhibition space of 12 sqm or less must be purchased as a shell scheme package. Electrical socket and connection charges are not included, and must be paid by the exhibitor.

Shell scheme:	£475 per sqm
---------------	--------------

NEED MORE SPACE?

If a larger sized stand is required than those shown in the exhibition floor plan, adjacent stands may be combined.

EXHIBITOR PROMOTION

All exhibitors at SfE BES are listed on the event web pages. You will also receive a 250 word listing within the programme.



94%

of delegates rated
SfE BES as good or
excellent over the
past 5 years

