

Enabling endocrinology's potential
to advance science and health



CORPORATE SUPPORT PACKAGE

www.endocrinology.org

Partnership level **CORPORATE SUPPORT**

Partnership level working is available to companies wishing to develop long-term strategic relationships with the Society and our members.

Benefits of partnering with us can include:

- **development of a package of activity tailored to meet your specific aims**
- **collaborative working with the Society for Endocrinology**
- **opportunities to support the SfE BES conference, National Clinical Cases and The Endocrine Academy (Clinical Update/Endocrine Nurse Update).**

Partnership working requires a minimum spend of £20,000 over two years. All activity packages will require approval from the SfE Clinical Committee and SfE Officers. The Society for Endocrinology has a policy of no endorsements from corporate sponsors on any of our products.

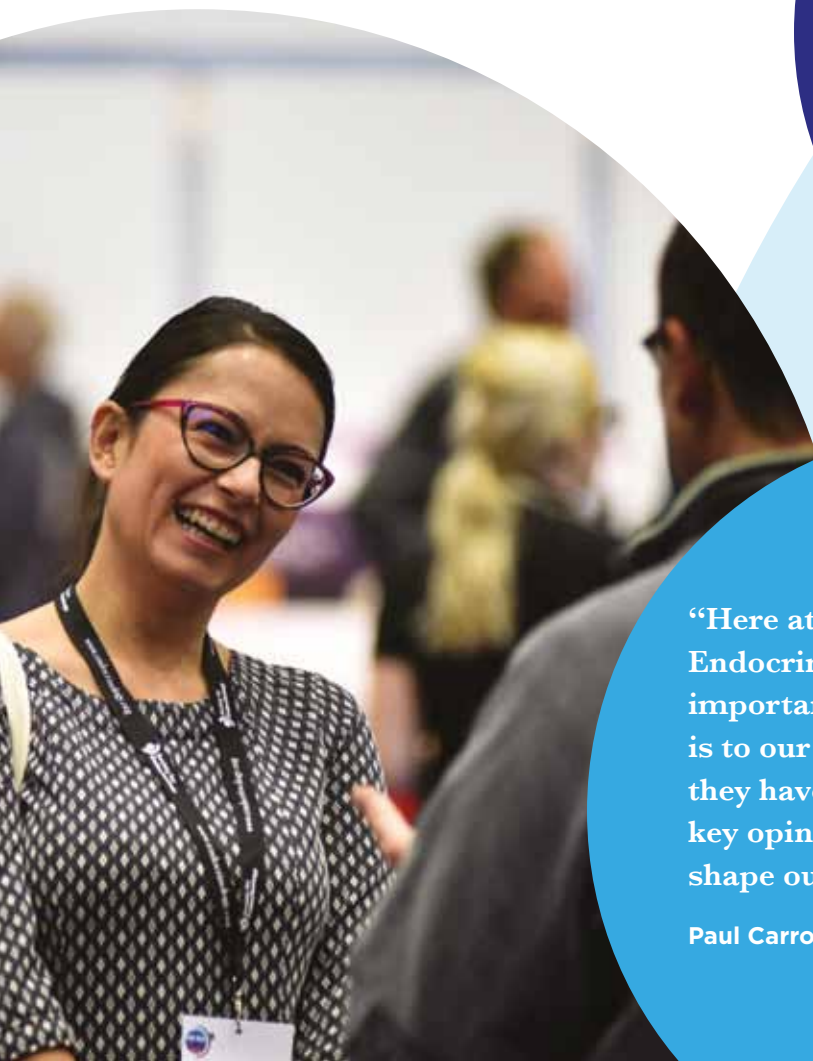


“Our partnership with SfE has been really important to Pfizer and we hope to build on the success over the coming years. The partnership has helped us to increase our visibility and strengthen our relationships with their membership.”

James Steed, UK Country Brand Lead, Pfizer

“Here at the Society for Endocrinology, we recognise how important the pharmaceutical industry is to our field and feel it’s important they have an equal voice alongside our key opinion leaders and those who shape our discipline.”

Paul Carroll, Chair of the Corporate Liaison Board



Gold and silver level

CORPORATE SUPPORT

Do you need to promote your products to a targeted community of endocrinologists? Would your organisation benefit from access to key opinion leaders in the field? Do you need to demonstrate your organisation's corporate social responsibility credentials? Whatever your objectives, the Society for Endocrinology can provide you with a sponsorship package that will maximise your return on investment.

Visibility

Profile in Society for Endocrinology's quarterly magazine: *The Endocrinologist*

Profile on Society for Endocrinology website

Acknowledgement at all events

Logos included on key conference signage.

Opportunity to promote your corporate support involvement at your stand

Events

Exhibition stand at SfE BES

Priority stand space at SfE BES

Discount on additional stand space at SfE BES

Priority booking of a satellite at SfE BES

Discount at Society training events

Priority satellite at The Endocrine Academy (Clinical Update/Endocrine Nurse Update)

Information and knowledge

A copy of Society for Endocrinology's quarterly magazine: *The Endocrinologist*

Collaboration

Attendance at KOL meeting at SfE BES

SfE BES planning meeting attendance

Bi-annual 1-2-1 meeting with a Corporate Liaison Board (CLB) representative

Corporate Liaison Board (CLB) meeting attendance

Pick and mix

Advertising in Society for Endocrinology's quarterly magazine *The Endocrinologist*

Online advertising with the Society journal of your choice

Emails to Society for Endocrinology members

Opt-in members only. Emails to be sent by the Society on your behalf.

Email to registered delegates after each event

Opt-in delegates only. Email to be sent by the Society on your behalf.

Total Cost



Exclusive items



Gold

Silver

Included

Name only

Included

Name only

Included

Included

9 sqm

3rd

3%

2%

3%

2%

Included

Included

Included

Included

Included

Included

Included

Choose to include 3 of the following

Choose to include 1 of the following

£10,000

£2,500

If you would like to become a Corporate Supporter or find out some more information please contact Amanda Helm on:

+44 (0)1454 642268 or **amanda.helm@endocrinology.org**

If you would like to find out more about the Society for Endocrinology please visit **www.endocrinology.org**

About the **SOCIETY FOR ENDOCRINOLOGY**

Established in 1946, the Society for Endocrinology is the UK home of endocrinology. We bring the global endocrine community together to share ideas and advance our discipline. As a membership organisation, we support scientists, clinicians and nurses who work with hormones throughout their careers. We provide our Corporate Supporters with access to this diverse membership to help extend the reach of your products, and inform the development of new ones, to advance endocrine science, and improve human health.



Why become a **CORPORATE SUPPORTER**

Becoming a Corporate Supporter of the Society for Endocrinology can help to raise your company's profile in endocrinology and related disciplines.

Working together, we can provide you with:

- exposure to the endocrine community through advertising in Society for Endocrinology publications, and presence at events
- access to around 2,600 members and 1,450 delegates (including clinicians, basic scientists, early career endocrinologists, nurses and students) through events and member communications
- access to key contacts within the field of endocrinology and market intelligence from our members to help you to further understand your target audience
- discounted event rates to enable you to keep up to date with the latest research and practice in endocrinology
- enhanced reputation through alignment with a trusted society
- corporate social responsibility - all monies given to the Society for Endocrinology will benefit the endocrine community.

Society for Endocrinology membership profile



Clinician
56%



Nurse
5%



Scientist
22%



Honorary
1%



Senior
8%



Student
5%



Other
4%



Society for Endocrinology

Unit 22 Apex Court
Woodlands
Bristol
BS32 4JT

 +44 (0)1454 642200

 info@endocrinology.org

 www.endocrinology.org

 [@Soc_Endo](https://twitter.com/Soc_Endo)

Company limited by guarantee.
Registered in England no. 349408.
Registered office as above.
Registered charity no. 266813